



GANESH ENGINEERING

CNC TURNING & VMC MILLING &
FABRICATION WORKS

 **TUVINDIA**



INFORMATION BOOKLET >>>



25
YEAR
ANNIVERSARY

ABOUT US

GANESH ENGINEERING was founded in 2000 by Mr. G. Raja. Our specialty is producing high-quality machinery components, such as heavy valve parts, aluminium manifolds for wind turbines, heavy engineering parts, and manifold oil pumps therefore we handle all types of material. In compliance with ISO 9001:2015, 14001:2015, and 45001:2018 certifications, our company operates a quality system. QM 07 00236 (TUV Management Service) is its registration number.

MISSION

Our mission is to deliver and supply the most noteworthy quality products to our clients utilizing sustainable procedures that meet the most elevated global standard of the product. We trust that profoundly talented and motivated employees are the way to accomplishing our goals and we will keep on providing outstanding training and investment in their future.

VISION

Our vision is to participate consistently in the extending our generation limits and expanding our production capacities with a specific end goal to meet the epidemically developing worldwide demand and therefore hold our position at the front of the manufacturing & fabrication business.





CORE VALUES



ACCOUNTABILITY

We accept our individual and team responsibilities and we meet our commitments. We take responsibility for our performance in all of our decisions and actions.



COOPERATION

Good mutual cooperation across position and departments is the basis for a pleasant working atmosphere in which employees feel good about themselves and what they are doing. The outmoded oppositions between production and maintenance, factory and administration, production and sales no longer have any places. A modern company must be based on teamwork and mutual trust, on striving together for continuous improvement.



EMPOWERMENT

To empower our talented people to take the initiative and to do what's right.



INNOVATION

We are creative in delivering value to fellow associates, customers, manufacturers and the community. We anticipate change and capitalize on the many opportunities that arise.



LEADERSHIP

We encourage leadership among employees to develop and maintain a talent pool.



HEALTH AND ENVIRONMENT

We seek to improve our well-being, our working conditions and the surroundings in which we live in.



OPEN COMMUNICATION

All team members are encouraged to openly share their opinions and views.



POSITIVE CHANGE

Embracing and capitalizing on change recognizing that every employee must be empowered to simulate continuous improvement in all aspects of our business.



PROFESSIONALISM

We strive to fulfill our responsibility to the highest possible standards throughout.



TEAM WORK

Our team is supportive of each other's efforts, loyal to one another, and care for each other both personally and professionally. We are following 5s in our factory.

QUALITY POLICY



We at Ganesh Engineering are committed to provide Manufacture & Supply of Machined Components and good quality products that meets the need and expectation of our customers and other Interested Parties. Achieving right first time through an efficient risk management system by involving all employees to deliver quality products on Time supply to enhance the customer satisfaction.

Maintaining a shared quality vision and a focus on continual improvement of our products, processes and services (including delivery). To abide by statutory and legal regulations while carrying out activities .

OUR WINNING CULTURE

Our Winning Culture defines the attitudes and behaviors that will be required of us to make our vision a reality.

Leadership	: Be real
Accountability	: If it is to be, it's up to me
Passion	: Committed in heart and mind
Diversity	: As inclusive as our brands
Quality	: What we do, we do well

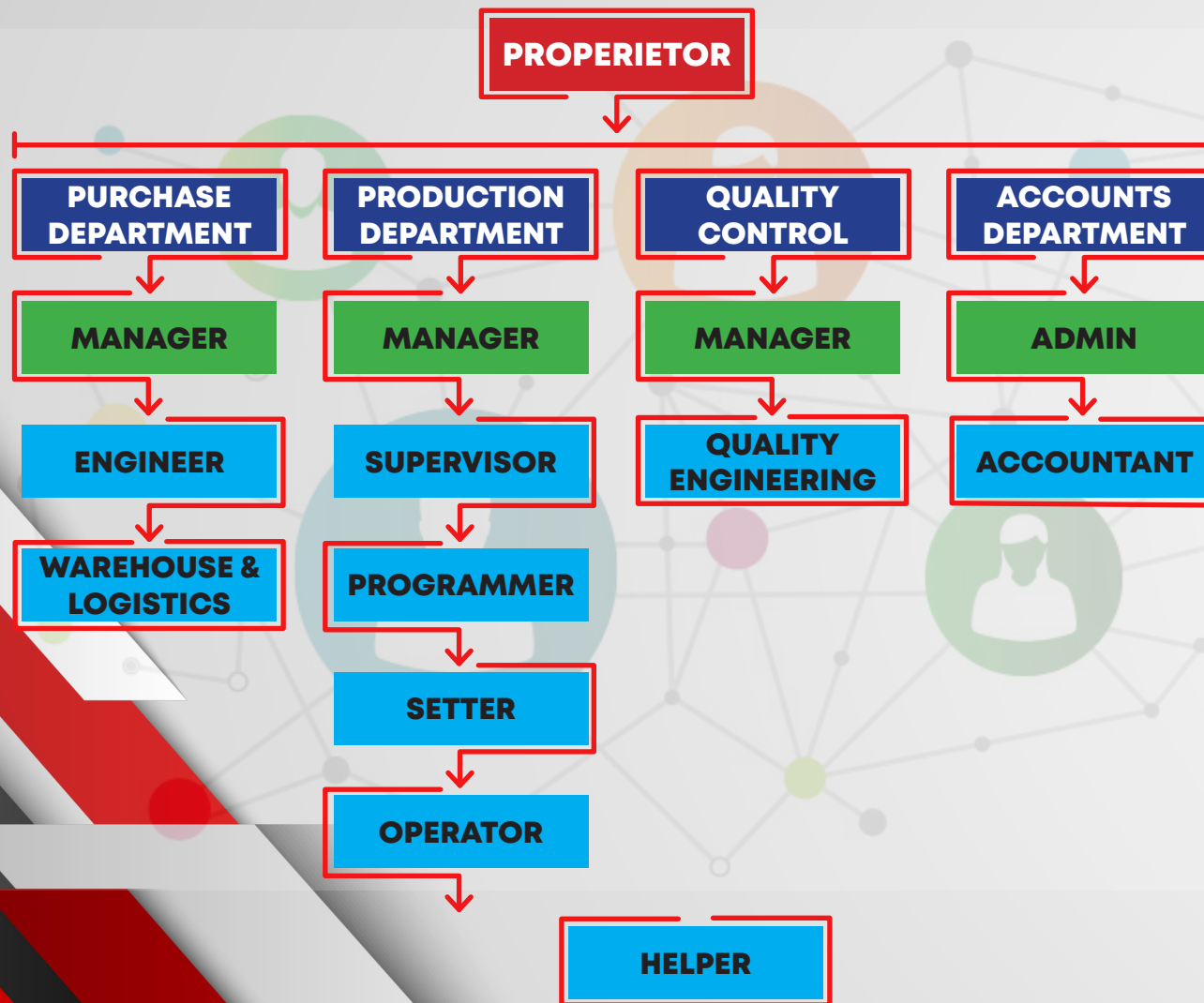
OUR VALUES: COMMITMENT TO QUALITY

SERVICE & INTEGRITY

We embrace and uphold our company values of personal and professional ethics, honesty and trust. Our commitment to quality is the core of our business. In order for our customers to have high-quality our parts used in their products must be of equally high quality. We have a system in place by which to control the flow of information from order receipt to delivery, and thereby ensure high quality with the shortest possible lead-time.

We make precision components

ORGANIZATION CHART



REGION OF THE COMPANY

- Total Area - 12000 Sqft
- Alloted Area - 8500 sqft
- Generator Facility - Capacity - 125KVA
- Plant Power Supply - 110 HP

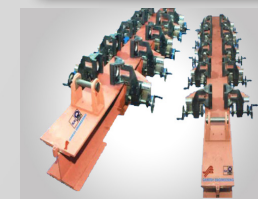
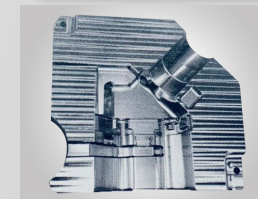
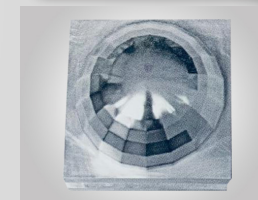
OPERATIONS

- CNC Turning
- VMC Milling
- Machining
- Drilling
- Welding
- Surface Grinding
- Band Saw Cutting
- MMDR Milling
- Lathe Machining

CNC Vertical Machining Center (SKYMASTER VM3018A)

Clamping Area	3200x1800
'X' Axis	3200
'Y' Axis	1800
'Z' Axis	1000
Number of Tools	24
Axis	Right Angle Milling Head

SKY MASTER
KRAFT



CNC Vertical Machining Center (SKYMASTER GK KRAFT VM2018A)

Clamping Area	2300x1800
'X' Axis	2300
'Y' Axis	1800
'Z' Axis	1000
Number of Tools	24
Axis	Right Angle Milling Head



Phillips

PSG 80160AHD

Height 700mm

X-Axis 1600mm

Y-Axis 850mm

Z-Axis 750mm



ASTRA BMV70+TC20



Clamping Area	1700 X 700
'X' Axis	1600mm
'Y' Axis	910mm
'Z' Axis	800mm
Number of Tools	20



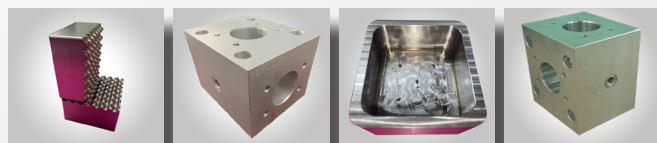


BFW

Bharat Fritz Werner

AGNI BMV45TC24 4th axis

Clamping Area	900 X 450
'X' Axis	600
'Y' Axis	450
'Z' Axis	500
'A' Axis	400/Dia-340mm
Number of Tools	24



AGNI - BMV45TC24

Clamping Area	900 X 450
'X' Axis	600
'Y' Axis	450
'Z' Axis	500
Number of Tools	24





BFW
Bharat Fritz Werner
CHAKRA
BMV60 TC24

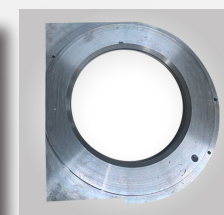
Clamping Area	1250 X 600
---------------	------------

'X' Axis	1000
----------	------

'Y' Axis	600
----------	-----

'Z' Axis	600
----------	-----

Number of Tools	24
-----------------	----



CNC Turning Machine - 2 Nos SUPERCUT-8 (PMT machine)

Chuck Diameter Ø 250

Length X Breath 400 X 650

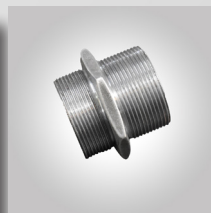
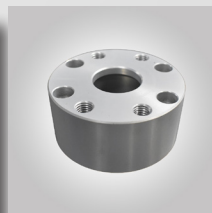
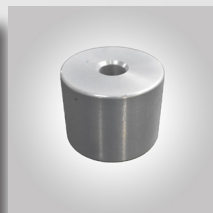
Number of Tools 8

CNC Turning Machine PMT SC8N (PMT MACHINE)

Chuck Diameter Ø 200

Length X Breath 450 X 700

Number of Tools 8





MILLING MACHINE

MMDRO MILLING MACHINE - DAI ICHE

'X'	–	900 mm
'Y'	–	300 mm
'Z'	–	300 mm

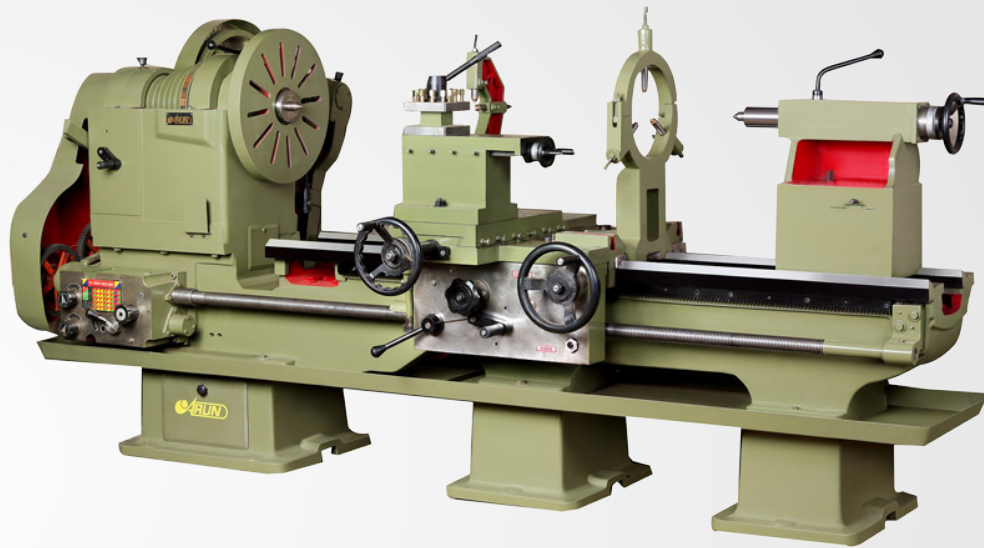
MMDRO MILLING MACHINE - MICRO CUT

'X'	–	1000 mm
'Y'	–	400 mm
'Z'	–	350 mm

MAKINO MILLING MACHINE

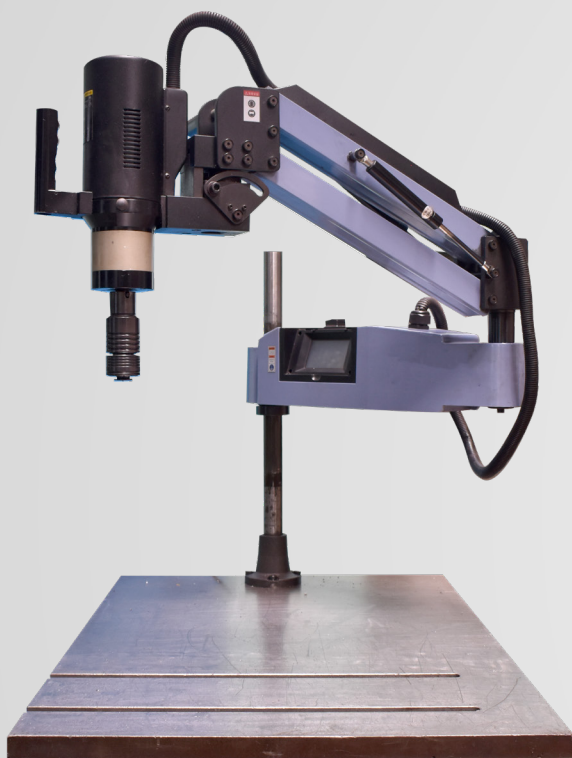
'X'	–	800 mm
'Y'	–	400 mm

HEAVY DUTY LATHE MACHINE



MACHINE	SIZE
HEAVY DUTY LATHE MACHINE MAKE & SPECIFICATION	
('U M T C) Lathe Maximum	– Ø1500x12Feet
Accurate Lathe Maximum	– Ø1250x12Feet

MACHINE	SIZE
LATHE MACHINE MAKE & SPECIFICATION	
RAJKOT Lathe	– Ø 475x10Feet
BHARAT Lathe	– Ø475X6Feet
ACCURATE Lathe	– Ø310X4Feet
DRILLING MACHINE	3 Nos
1 1/2" Radial Drilling Machine	
2" Heavy Duty Drilling Machine	(MAS)
3" Heavy Duty Drilling Machine	(WEI JUN)
EOT CRANE FACILITY	1 Nos
CAPACITY	- 5 TON



TAPPING MACHINE

Max Hole Diameter : <50 mm

Voltage : Up to 380 V

Used For : TapM3/M16/M6/M24/M8/M34

Speed : 0-40 RPM

Work Range Min : 200

Work Range Max : 1100



FABRICATION SECTOR

WELDING MACHINE DETAILS

MIG WELDING MACHINE MIG 400I-IGBT

KORE – ARC-02 NOS

SETTING / ASSEMBLY TABLE

FREQUENCY (HZ): 50/60

RATED INPUT CURRENT (A): 14

OUTPUT CURRENT RANGE (A): 50-400

OUTPUT VOLTAGE ADJUSTMENT (V): 31.5

SIZE: 2.5 X 3.5



INSTRUMENT DETAILS

Mitutoyo

MEASURING INSTRUMENTS

Vernier	0 – 2000 mm
Digital Vernier	0 – 600 mm
Micrometer	0 – 400 mm / 500 – 800 mm
Bore gauge	10 – 260 mm
Height gauge	0 – 300 mm
Tube micrometer	0 – 1000mm
Portable Hardness Tester	
Portable Coating Thickness Digital Gauge	
Slip Gauge Set	
Surface Finish Master Set	

G.E. HAVING OTHER OUT SOURCING FACILITIES

- Laser Profile Cutting
- Shearing
- Folding
- Hot Dip Galvanizing
- Painting
- Hard Chrome Plating, Electro Plating, Nickel Plating
- Blacking, Phosphatation
- Heat Treatment
- Sursulf Nitriding
- Anodizing Coating
- All Type Grinding

Mastercam®

Mastercam certified user



We make precision components with the maximum micron limit and add we inspect with CMM in case of request..

OUR VALUABLE CLIENTS



L&T Rubber Processing Machinery

KOBELCO[®]

HINE
HYDRAULICS

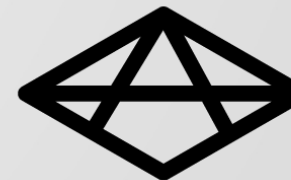


TOSHIBA
Leading Innovation >>>

JSW



**SCHWING
Stetter**



Alektion Engineering Industries



GANESH ENGINEERING

CNC TURNING & VMC MILLING &
FABRICATION WORKS

No.35, SIDCO Womens Industrial Park, Kattoor, Vellanoor Post, Chennai - 600 062

MOBILE : +91 9962903847 | +91 94447 56846 | +91 8939666703

Landline: 044 29993847

MAIL : ganesh6033@yahoo.co.in / ganeshenggacc@gmail.com

WEB: www.ganeshengineeringcnc.com

GST No: 33AGSPR4087Q1ZB | PAN No: AGSPR4087Q



SCAN ME

LOGISTICS
AVAILABLE

